



Notting Hill Gate, London, W11 3QW

Perched on a high floor of the prestigious Campden Hill Towers, this beautifully appointed two-bedroom duplex showcases sweeping panoramic views and refined contemporary living in the heart of Notting Hill.

Bathed in natural light, the spacious reception room features floor-to-ceiling sliding glass doors that open onto a private balcony, offering uninterrupted skyline vistas, the perfect setting for morning coffee or evening entertaining. The elegant open-plan kitchen is finished with luxurious wooden worktops and equipped with integrated appliances, ideal for modern urban living.

Both double bedrooms have been thoughtfully designed, built-in wardrobes, and refined finishes throughout. A sleek modern bathroom and a separate WC complete this sophisticated home.

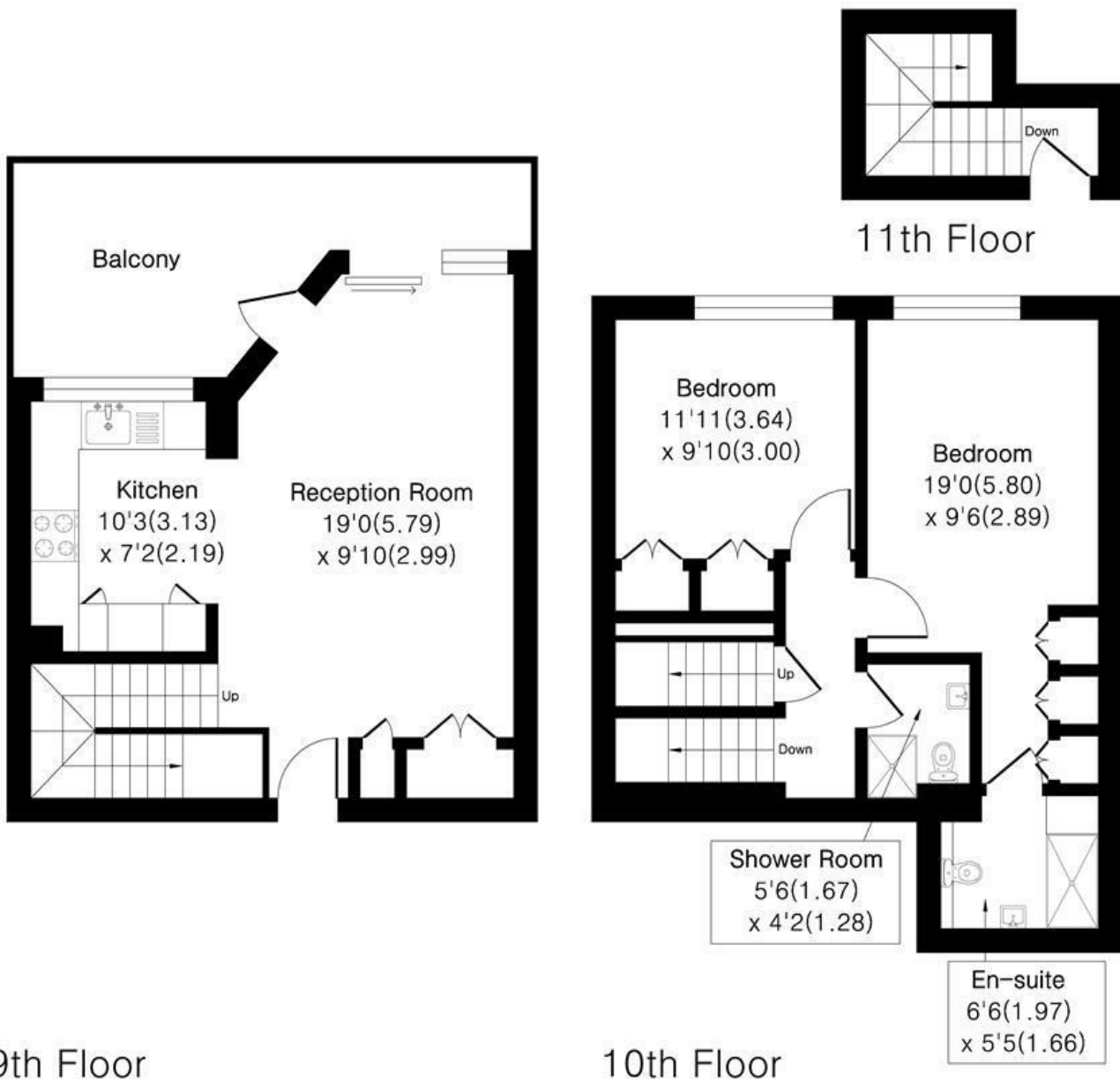
- Spectacular panoramic city views from a private balcony
- Two generously sized double bedrooms with custom interiors
- Part Furnished
- Lift access, concierge service, and on-site porter
- Immaculately maintained building in a sought-after location

Alex & Matteo
ESTATE AGENTS

£3,300 Per month

Campden Hill Towers W11

Approximate Area = 835 sq ft / 77.6 sq m



Floor plan Produced in accordance with RICS Property Measurement 2nd Edition.
Incorporating International Property Measurement Standards (IPMS2 Residential).
Produced for Alex & Matteo Estate Agents.



Energy Efficiency Rating		
	Current	Potential
Very energy efficient - lower running costs		
(92 plus) A		
(81-91) B		
(69-80) C	80	80
(55-68) D		
(39-54) E		
(21-38) F		
(1-20) G		
Not energy efficient - higher running costs		
England & Wales		
	EU Directive 2002/91/EC	